



RELEASE NOTE

ARMONÍAPLUS rev 2.8.3

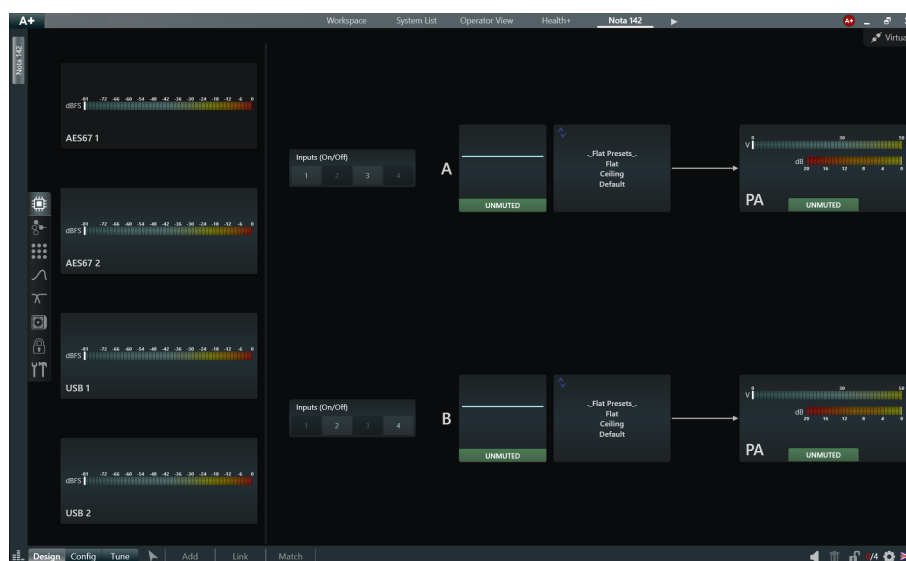
This document highlights the continued evolution of ArmoníaPlus 2.8, with the release of rev 2.8.1, available starting June 5, 2025. Following the major 2.8 release, which introduced the touring models **UNICA 4T | 20K4** and **UNICA 8T | 10K8**, along with significant workspace enhancements, rev 2.8.1 brings a series of incremental updates focused on functionality and user experience.

Below you'll find a summary of the new features introduced in rev 2.8.1, followed by the bug fixes and firmware versions included in rev 2.8.4. (released September 18, 2025) and rev. 2.8.0.

FEATURES

SUPPORT FOR NOTA

The ultra-compact PoE amplifier, **NOTA 142**, is now fully supported within ArmoníaPlus.



SUPPORT FOR DC RIDER

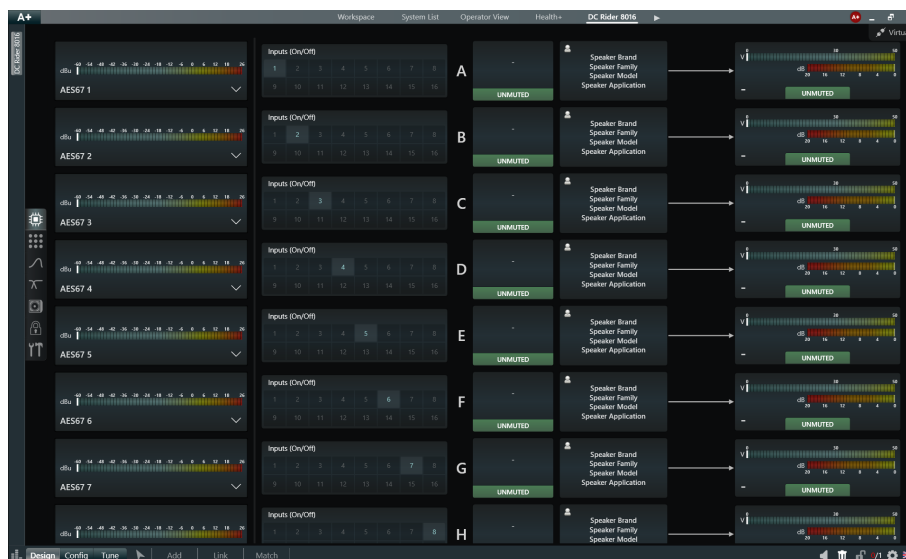
Via Enrico Conti, 5
Scandicci (Fi) 50018 - Italia

✉ powersoft@pec.it

☎ +39 055 73 50 230

☎ +39 055 73 56 235

Added compatibility with the **DC Rider** onboard amplifier, available in both 8-channel and 16-channel models.



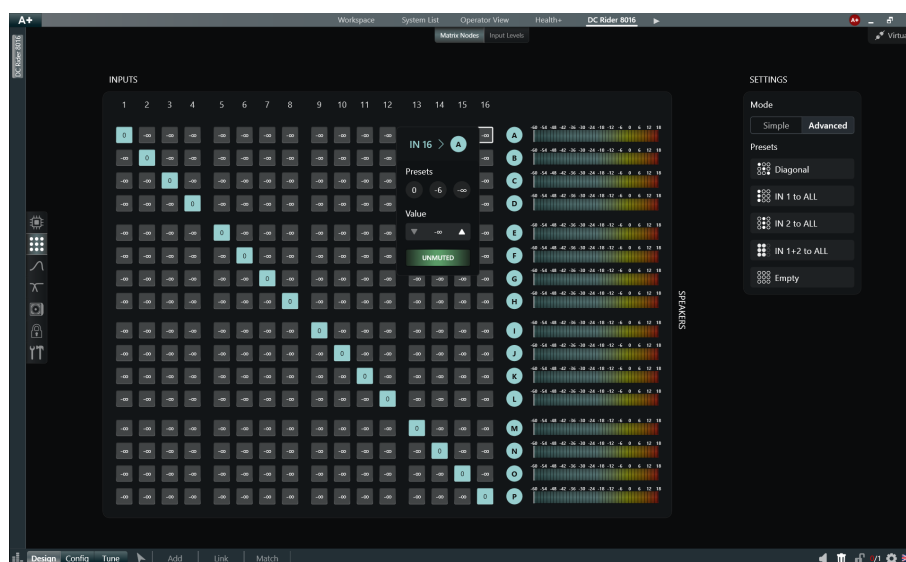
EQ A/B COMPARISON

A new A/B feature enables users to easily compare two EQ configurations, allowing for quick evaluations and precise fine-tuning without disrupting workflow.



MATRIX PAGE REDESIGN

The Matrix pages have been redesigned for better usability and scalability, making it easier to manage large channel counts.



ArmoníaPlus 2.8

Via Enrico Conti, 5
Scandicci (Fi) 50018 - Italia

✉ powersoft@pec.it

☎ +39 055 73 50 230

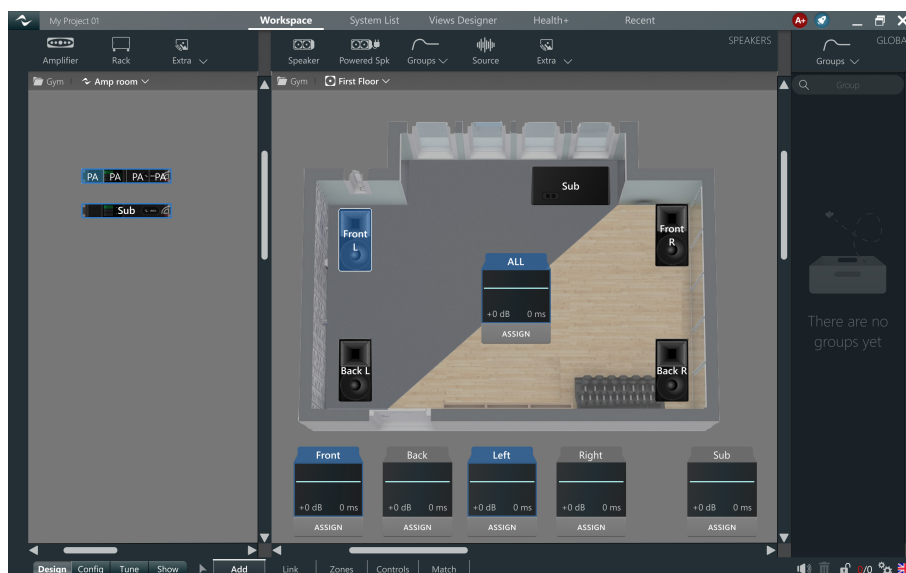
☎ +39 055 73 56 235

The following features were introduced in ArmoníaPlus 2.8, listed in order of appearance:

- ENHANCED GROUP ASSIGNMENT FOR FASTER SYSTEM VISUALIZATION
- MORE CONTROL FROM THE SPEAKER'S PERSPECTIVE
- IMPROVED DEVICE SELECTION & POWER MANAGEMENT
- "REPLACE WITH" – SEAMLESS DEVICE SWAPPING
- DISPLAY READ-ONLY MODE FOR UNICA
- CONFIG/PRESET ENHANCEMENTS
- CONFIG/NETWORK – EXPANDED NETWORK CONFIGURATION OPTIONS
- CHANNEL STRIP MODE
- MUTE/SOLO

ENHANCED GROUP ASSIGNMENT FOR FASTER SYSTEM VISUALIZATION

Easily identify which group a speaker is assigned to with a simple selection. When a speaker is selected, its associated group names will be highlighted in blue, making it quicker to verify assignments and navigate between elements in the system.



MORE CONTROL FROM THE SPEAKER'S PERSPECTIVE

The Advanced EQ page, accessible by double-clicking a speaker or via the EQ button in Tune / Ch Strip, now provides deeper insights into each speaker's configuration.

Users can quickly view:

- Speaker Name for clear identification;
- Preset Model, Application, and Manufacturer's EQ (if available);
- New additional tab for each assigned group.

If a group applies filters to a speaker, its corresponding tab will display a badge indicating the total filter count. This allows users to easily track and navigate group-based EQ modifications. Clicking on a group tab will redirect users to the group's EQ settings, enabling direct adjustments without unnecessary steps.

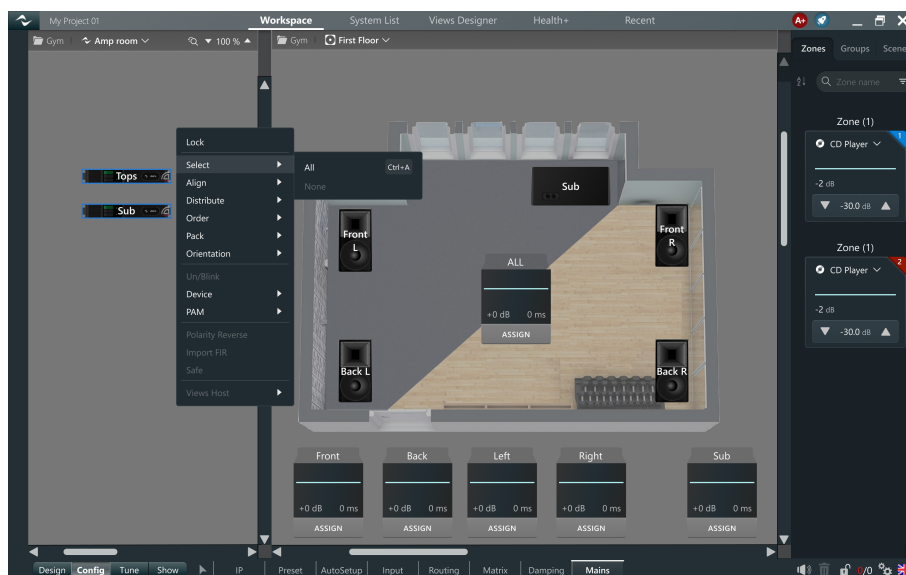


IMPROVED DEVICE SELECTION & POWER MANAGEMENT

Managing mains-related configurations via workspace is now easier with two key improvements: “Select All” & “Config/Mains” Enhancements.

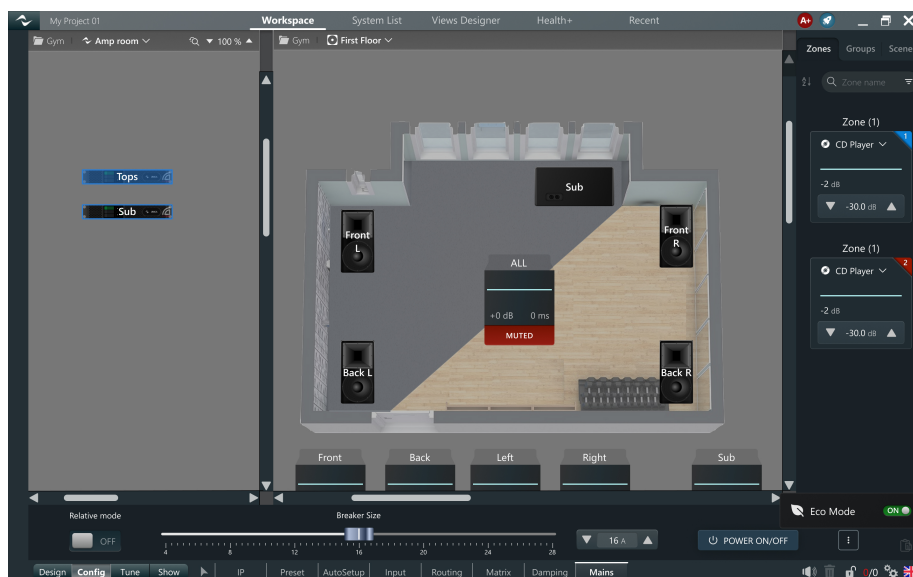
Quickly select or unselect all devices in a workspace using the right-click menu:

- Select > All (to highlight all devices)
- Select > None (to clear selections)



The Select All / None works seamlessly with the new bottom-bar “Config/Mains” controls, which now allow users to:

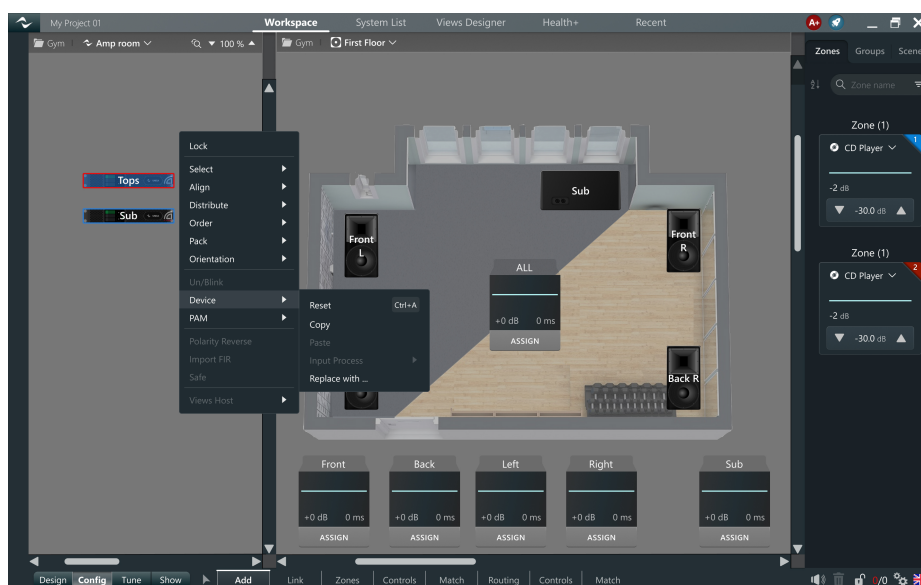
- Turn devices on/off
- Manage eco-mode settings



Previously, power control was only available in the System List, and eco-mode had to be adjusted individually for each device in the settings menu.

“REPLACE WITH” – SEAMLESS DEVICE SWAPPING

The Replace With function allows users to swap a faulty device with a new one without manual reconfiguration. The function is accessible via right-click menu on the workspace, under Device > Replace with ...

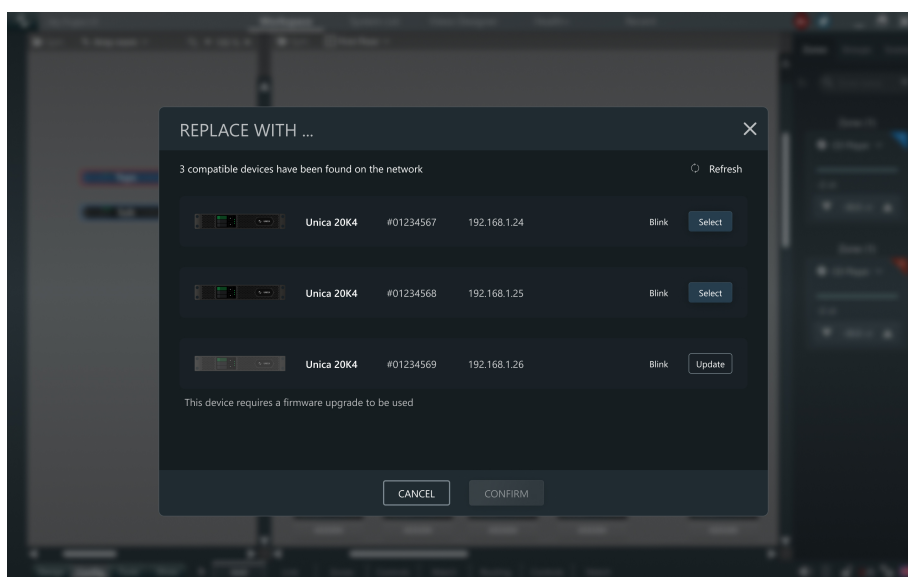


When replacing a device, the destination amplifier will automatically inherit:

- The latest running DSP configuration;
- Control network settings;
- Dante settings and patching.

Important Usage Notes:

- The source device must be offline before replacement to prevent conflicts;
- The destination amplifier must match the source model to ensure proper parameter mapping;
- Once replacement is complete, the original device should not be reconnected to the same network hosting the new amplifier to avoid conflicts.

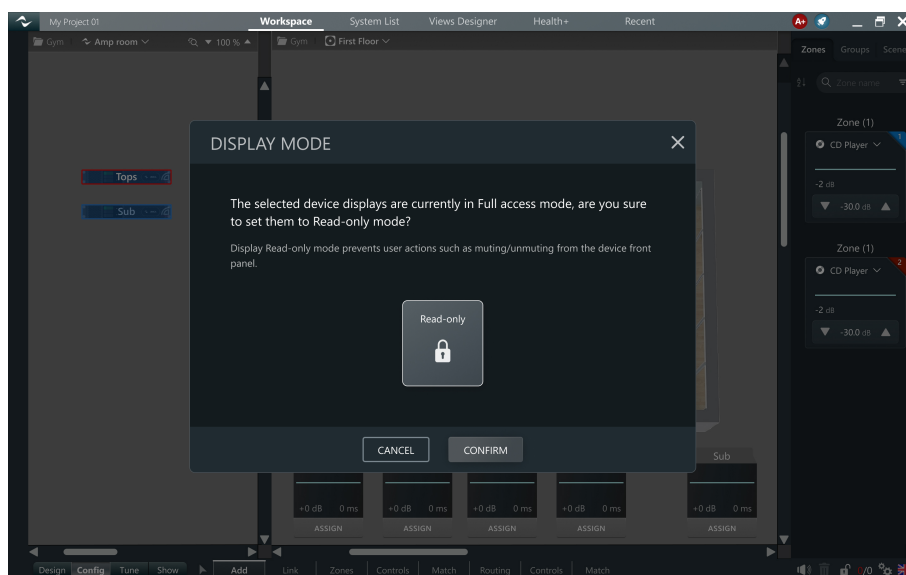


DISPLAY READ-ONLY MODE FOR UNICA

To enhance security in unattended systems, users can now enable Display Read-Only Mode on Unica amplifiers, restricting operations such as muting/unmuting channels.

This setting can be enabled via the right-click menu:

- Device > Display Mode
- Alternatively, it can be configured through the Device General Settings panel



CONFIG/PRESET ENHANCEMENTS

Preset selection is now more intuitive with the following improvements:

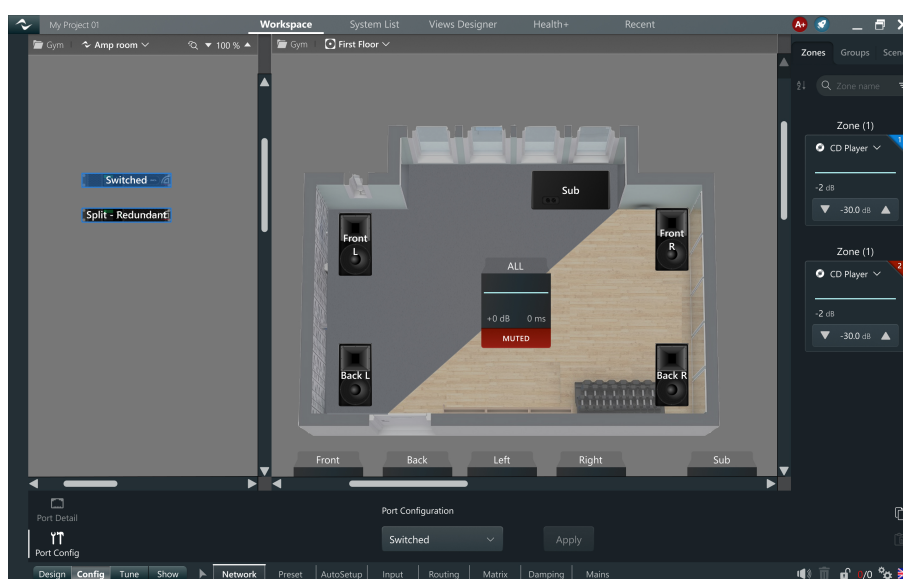
- The applied preset application is directly displayed on speakers, making it easier to confirm correct assignments;
- A new tooltip provides detailed information about Application and Manufacturer's EQ (if present) when hovering over a speaker;
- Users can now select and control preset Application and Manufacturer's EQ categories across multiple speakers, even when preset models differ—provided the Applications and Manufacturer's EQ categories share the same options.



CONFIG/NETWORK – EXPANDED NETWORK CONFIGURATION OPTIONS

The Config/IP section has been renamed to Config/Network, reflecting its broader functionality. Users can now fully configure network settings for multiple amplifiers, including:

- Changing port configurations (Switched, Split, etc.);
- Assigning IP addresses and modes across all Ethernet ports (Previously, only the control port could be modified).



CHANNEL STRIP MODE

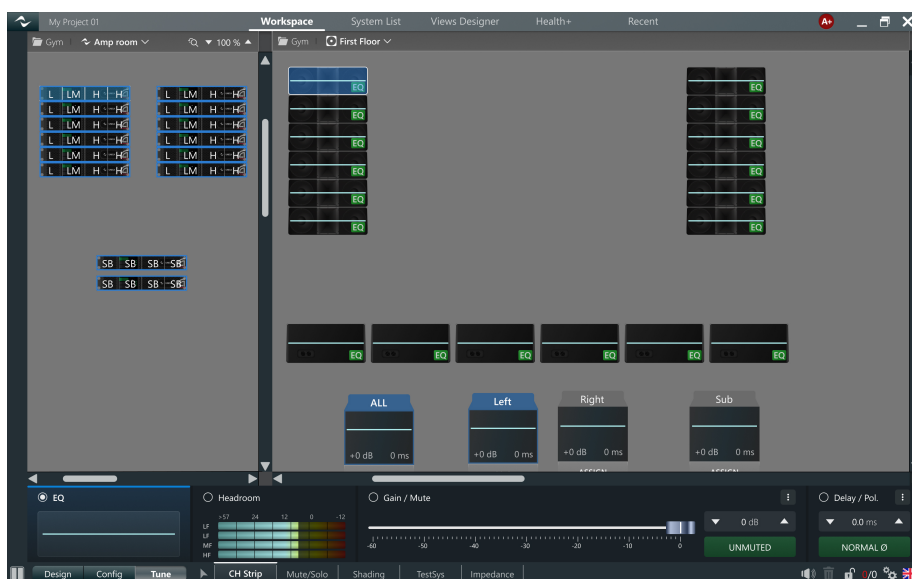
A significant enhancement is now available in the workspace tuning step, the new Channel Strip Mode merges multiple functions into a single streamlined interface.

Previously, users had to adjust settings separately across multiple functions (Gain, Mute, EQ, Delay, Polarity). This slowed down non-linear workflows, particularly in complex tuning scenarios.

Channel Strip Mode unifies:

- EQ Adjustments
- Headroom Visualization
- Gain, Mute, Delay, and Polarity Controls

This simplifies workflow, enabling faster, more intuitive adjustments, particularly for advanced system tuning.

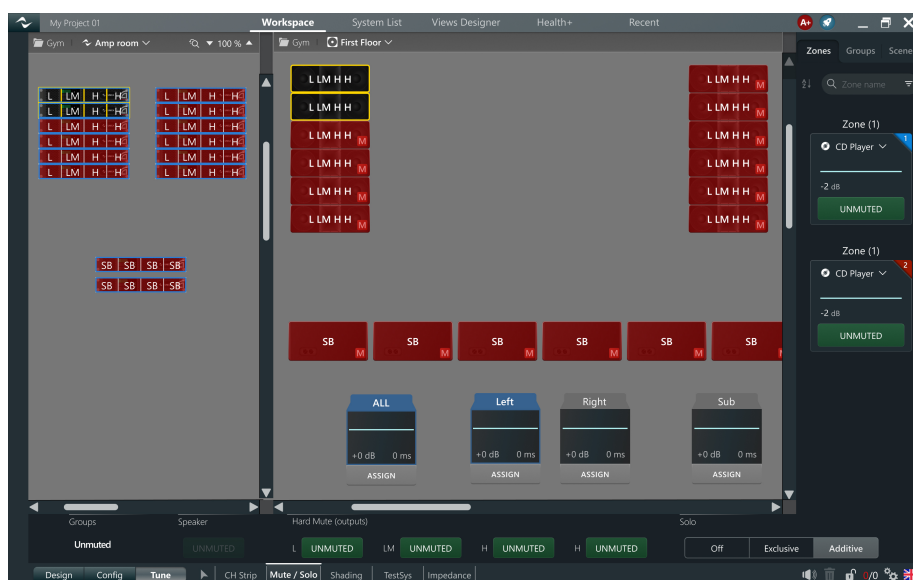


MUTE/SOLO

Mute and Solo pages have been merged into Mute/Solo.

The new page enhances solo functionality by introducing Exclusive and Additive modes:

- Exclusive mode retains the previous behavior, allowing only one speaker to be unmuted at a time;
- Additive mode enables stacking (or “piling”) multiple speakers in solo mode, facilitating tuning and studying interactions for specific system sub-sections.



FEATURES AND BUG FIXES

ArmoníaPlus 2.8.4

Below are the new features introduced in ArmoniaPlus rev 2.8.4:

- **Bulk Edit via CSV**
Export a comma-separated file containing key device parameters, edit it in any text or spreadsheet tool, and re-import to apply fleet-wide changes in seconds
- **Template Operator View Support**
Operator-view layouts are now stored inside templates, making it easy to deploy consistent control pages across projects
- **Smart Autosave**
Autosave triggers only when the user is idle, eliminating unwanted pauses while you work
- **Expanded GPX Management – Unica Series**
Pin polarity can now be set individually, and an external LED can be assigned for remote Blink indications
- **PTP Slave Mode – Unica Series**
Devices can now be forced to operate exclusively as PTP slaves, ensuring deterministic clock behavior in complex networks
- **Disable Dante TX – Unica Series**
TX channels can be entirely disabled to streamline Dante Controller matrix or when network policy requires
- **Dynamic EQ – Nota Series**
Nota amplifiers gain 3 bands of dynamic equalization

Bug fixes and minor improvements

- Minor fixes and performance improvements

ArmoníaPlus 2.8.3

Below are the new features introduced in ArmoniaPlus rev 2.8.3:

Bug Fixes and Minor Improvements

- Fixed a bug from 2.8.0 that could cause a crash when a zone or a source is selected in CH Strip Workspace page.

Firmware bundled with the release

- Unica & Unica T: 1.12.0
- Mezzo Series: 1.6.1
- T Series: 1.12.0
- X Series: 1.12.0
- Ottocanali, Quattrocanali and Duecanali DSP Series: 1.12.0
- Quattrocanali: 2.0.2
- Dsp4: 1.6.28
- IPAL, MDrive: 1.8.6
- WallMount Touch: 1.3.1
- PC ViewsHost: 3.1
- Verso: 1.0.1

ArmoníaPlus 2.8.1

Below are the new features introduced in ArmoniaPlus rev 2.8.1:

- SUPPORT FOR NOTA
- SUPPORT FOR DC RIDER
- EQ A/B COMPARISON
- MATRIX PAGE REDESIGN

Bug Fixes and Minor Improvements

- Resolved a rare issue where importing an EQ layer with a large number of filters could occasionally lead to incorrect application of filter parameters.
- The *Hard Mute* status of Speakers and Ways is now accurately displayed across all workspace pages.

- The *Mute/Solo* rubber-band indicator is now correctly shown, even when no elements are selected.
- *Standby* status is now clearly visible in the *Config > Mains* page.
- Various minor fixes and overall performance enhancements have been implemented.